

FLEET MANAGEMENT

Hoover CS can unlock the potential performance of your tank fleet with our unique Fleet Management Program – consisting of advanced tracking technologies, our proprietary FleetAI™ platform, and thought partnership. Lost tanks, high costs, and wasted time are common challenges with managing large fleets. Let us help you better understand the movement and speed of your tanks, what it means for your operations, and what you can do differently to maximize the value and performance of your fleet.

REDUCE TOTAL PACKAGING COSTS

- Right size your fleet
- Significantly reduce money spent on tank losses
- Reduce compliance risk and cost across the fleet

IMPROVE OPERATIONAL INEFFICIENCIES

- Improve inventory management
- Increase visibility of delivery schedules, frequency and demand
- Reduce company risk with all tanks 100% DOT-compliant

INCREASE OVERALL PRODUCTIVITY

- Improve tank utilization and turns
- Optimize wash frequency with product history
- Identify and address underutilized units

ADVANCED TECHNOLOGY

Whether you need to track assets indoors, outdoors or offshore, we have a variety of tracking technologies for you to choose from.

- Safety ratings of CID1/ATEX and CID2
- Cellular, GPS, WiFi, and Satellite Hybrid options
- Real-time and intermittent tracking options available

PROPRIETARY PLATFORM

Through FleetAI, customers get access to standard and customizable dashboards, reporting & alerts, level monitoring, document storage, and more.

- View important documents
- See tank locations and movements
- Create BOLs for telemetry repair & services

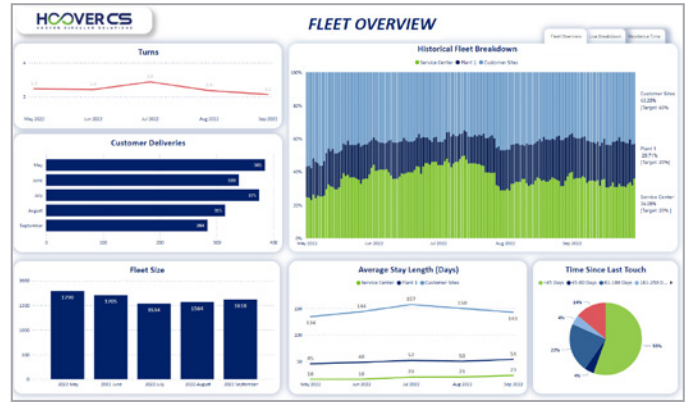


Industrial tracking solution installed on a 350-gallon side drain stainless-steel IBC, opposite of valve discharge

THOUGHT PARTNERSHIP

Our team assesses the current state of your fleet and explores areas of potential cost savings by identifying how to improve fleet turns while reducing costs of tanks, trucking, and washes.

- Provide customized dashboards and reports
- Develop and evaluate KPIs
- Hold regular meetings, brainstorming, and data analysis



Speak with a Hoover CS Representative today to learn more about our Fleet Management Program.

ENVIRONMENTAL IMPACT

Our reusable packaging supports the following United Nations' Sustainable Development Goals:



ABOUT HOOVER CS

We are paving the way for companies across the chemical, refining and general industrial-end markets to move away from single-use containers. Through our large rental fleet of reusable liquid and dry IBCs and ISO tanks, combined with integrity management and fleet management services, our sustainable packaging solutions facilitate circularity across the supply chain, yielding an optimized environmental footprint through reduced plastic, water conservation, and lower greenhouse gas emissions.

→ Learn more at www.hooversolutions.com

✉ Questions? Email us at info@hooversolutions.com



ecovadis
Business Sustainability Ratings
Ask about our current rating